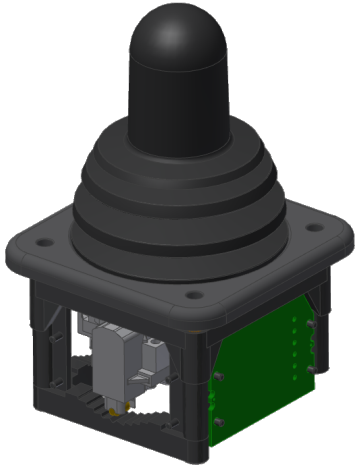


Joystick SK197

Designed Specifically For Remote Controls



Our new SK197 joystick was specifically designed for the growing remote control markets. We utilized our years of experience and came up with a joystick that is ideal for many different remote control applications.

The SK197 is small in size but provides operators with a 26° operating angle to control machines with great precision.

The interface can be tailored to plug straight into the remote manufacturers electronics.

We offer redundant signal and many other options for this innovative product.

Technical Description

Electrical functions	Proportional / Analog Digital - Up To 5 Steps Proportional & Digital Combinations Center Tap & Directional Contacts Optional Redundant or Dual Redundant Signals
Mechanical functions	Up To 3 Axes (X/Y/Z) Self Centering With or Without Cross Guidance
Technology	Hall Effect Sensors - 5V (ca. 16mA Per Signal) Conductive Plastic - Max. 30VDC - Center Detect Combinations Possible
Dimensions	Ø Housing = ca. 41mm / 1.61"
Mounting	4 screws - M4 - From Bottom (Standard) - Optional Top Mounting
Operating angle	Up to 26°
Durability	More than 3 Mio. cycles
Operating voltage	Max. 30 V DC
Interfaces	Analog & Digital Standard Optional = Custom, CanOpen, J1939, USB
Connection	Standard = Minitek Plug (Others On Request)
Temperature range	-30°...+80°C / -22°...+176°F
Protection class	Up to IP65 / NEMA 4(X)