

Joysticks

Poignées de pilotage
Steuerknüppel

Rotary potentiometers

Potentiomètres rotatifs
Drehpotentiometer

Linear motion transducers

Capteurs de déplacement
Wegaufnehmer

High precision control and measurement systems in trusted Swiss quality

Certified ISO 9001: 2008

In 1958, the engineer Mr. Jürg Genge founded the company and was subsequently joined by Mr. Alfred Thoma. The company later moved to its current location at the foot of the Jura mountain range, in the heartland of the most famous Swiss watch production sites where mechanical innovation and electrical engineering are practiced with passion.

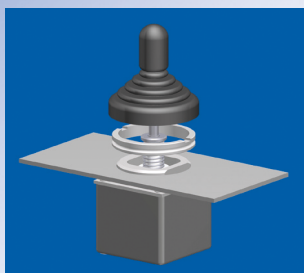
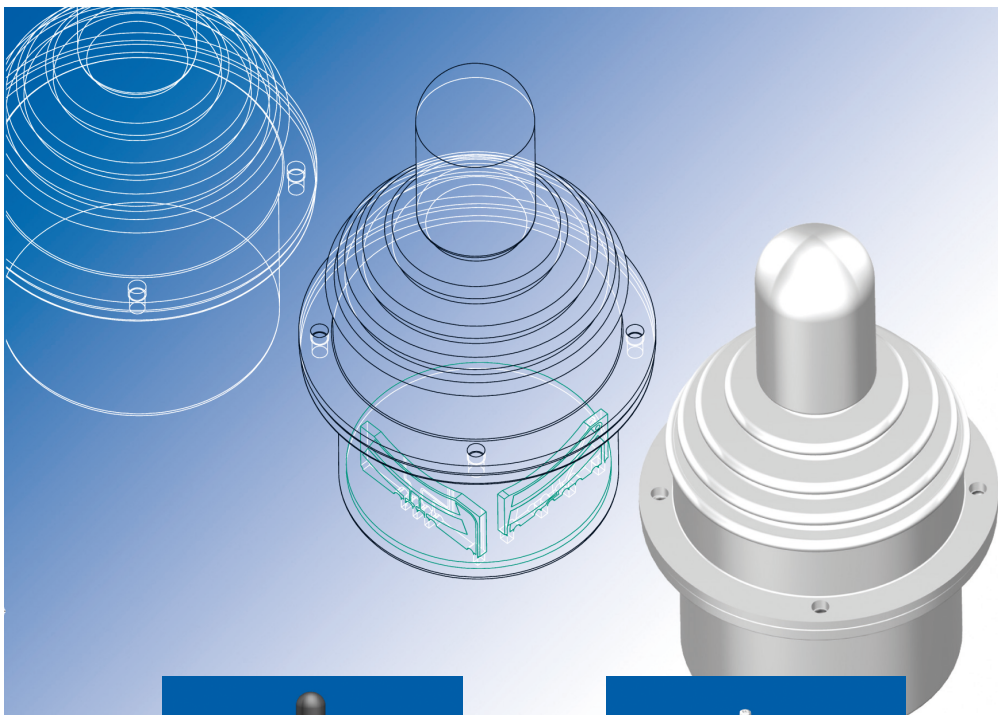
Genge & Thoma AG
joysticks & sensors



In 2006, the company underwent a change of ownership as part of a succession process, and has since been managed successfully by the new owners, the Grete family.

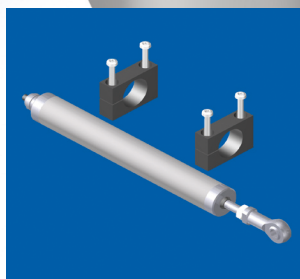
Today, after several years of growth, more than 30 motivated employees are engineering and manufacturing high quality electromechanical systems for measurement and multidimensional control devices as man-/ machine interfaces.

The main focus is on engineering and efficient production to meet the requirements of our customers with affordable solutions and top-edge technologies.



Joysticks

With many decades of experience, Genge & Thoma AG develops and manufactures standard as well as customized solutions, which are characterized by their ergonomics, their precise control characteristics and long life cycles. In highly sensitive medical equipment, on machine tools, in the heavy load industry or on any kind of vehicles, Genge & Thoma AG joysticks perform an authentic, accurate and reliable task. They are robust, waterproof and they withstand enduring stress. Different compact designs allow installation in confined spaces.



Linear motion sensors

Genge & Thoma AG produces a wide range of different standard stroke lengths for the most diverse applications, for example robotics, automation engineering, mechanical sensing and sampling, machine tools and processing machines, the paper and food processing industry, the textile industry, special vehicle construction, x-ray environment, geotechnical engineering and medical technology. Built to last, with top-quality, hardy materials for rugged conditions, Genge & Thoma AG transducers perform a high-precision, dependable job.



Rotary sensors

Fields of application: automation, actuators, dancer regulators, control units, steering and stroke angles on special vehicles or electric vehicles, operating consoles, scooters, etc. Genge & Thoma AG is able to custom-design special potentiometers, for example if the space available does not permit use of standard products, or if you need a special resistance or any kind of combined signal. Genge & Thoma AG has an own engineering department, which can efficiently co-operate with your R&D department to find a quick and cost-saving solution.

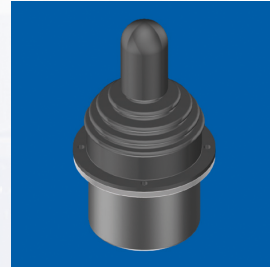
Applications

Genge & Thoma AG
joysticks & sensors

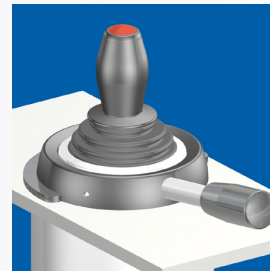


Joysticks, linear motion transducers and rotary potentiometers for all fields of advanced technologies, for

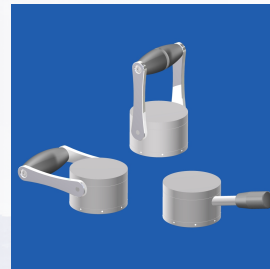
example medical equipment, engineering, rehabilitation, robotics, etc.



Joysticks and special marine controllers for all sectors of the marine industry as well as custom designed controls for yachts.



Joysticks with special interfaces (e.g. CANopen, USB), models with friction brakes, using special materials (wood, chromed steel, aluminum, etc.).



Multifunctional joysticks, linear motion transducers, wigwag and rotary potentiometers for special vehicles, construction, agricultural or communal machines, driver's cabins, fork-lifts and electric vehicles,



remote automation technology, heavy load transporters, controls, power production plants. Sensing and measuring machines, geotechnical engineering, and, etc.

You name it, we build it.





**Swiss quality professional
joysticks, linear motion
transducers, rotary / wigwag
potentiometers**

Bürenstrasse 10
CH-2543 Lengnau
Switzerland
Phone +41 (0) 32 652 33 30
Fax +41 (0) 32 652 17 02
www.gengethoma.ch
info@gengethoma.ch

**Worldwide export – more
than 90% of our production
is exported to over 50
countries.**

**Our products are supplied
via a steadily expanding
world wide network of
distribution partners.**

**Both, new products and
developments are regularly
published on our website:**

www.gengethoma.com

Our new **GT product finder
provides an overview of an
assortment of our product
range to help you finding
the required joystick or
sensor.**

European representatives:

**Belgium / Netherlands /
Luxembourg:**

HPR Techniek B.V.
www.hprtechniek.nl

Denmark:

FR-Tech ApS
www.fr-tech.dk

France:

mescan
www.mescan.com

Germany:

Alders electronic GmbH
www.alders.de

Italy:

Sirces srl
www.sirces.it

Norway:

Holst & Fleischer AS
www.holstfleischer.com

Romania:

Micro 92, Bucuresti
www.micro92.ro

Spain:

Mapro Ingenieria S.A.
www.maprosensor.com

Sweden:

Inkom Industrikomponenter AB
www.inkom.se

United Kingdom:

Variohm EuroSensor
www.variohm.com

North American representatives:

Canada:

GT Controls LLC
www.gt-controls.com

USA :

GT Controls LLC
www.gt-controls.com

Asian and Mideastern representatives:

Australia:

CAN automotion Australia Pty Ltd.
www.canautomotion.com.au

China / Hong Kong:

Group Tower Electronics LTD.
www.grouptower.com

India:

CAN automotion Pvt Ltd.
www.canautomotion.com.in

Israel:

ELIEL Security technologies Ltd

South Korea:

Semtoy Co.
www.semtoy.com

Taiwan:

Group Tower Electronics (Taiwan) LTD.
www.grouptower.com