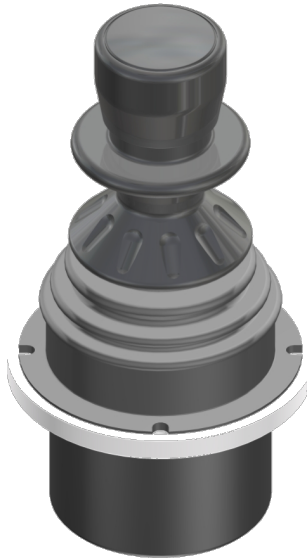


# Joystick SK60 Lock'N Stay



This joystick features the friction break function already found in our reliable "Put'n Stay" joystick, but adds up a mechanical, central position lock which can be released by pulling the collar ring on the handle.

Like all products of the SK 60 range, it is dust and splash-waterproof and it features the same small and low-depth base. This allows for an easy adaptation into shallow panels and restraint space conditions.

With a large choice of electric functions and interfaces, this joystick is predestined to be used in all kind of vehicles, machines, railways or naval applications.

## Technical Description

Dimensions	Mounting depth	32 mm / 1.26"
	Ø Housing	47 mm / 1.85"
	Ø Flange (adaptable)	60 mm / 2.36"
Mounting	4 x M3 screws Mounting ring	
Technology	Conductive plastic 5k Ohm (± 20%) Wiper current >10µA to max 1mA Center tab Optional redundant output	
Directional switch	Contacts Optional combined with analogue signal Micro switches up to 5 A Neutral position switch	
Operating voltage	Max. 30 V DC	
Operating angle	15°	
Connection	Dubox or cable Customer specific connectors USB or CANbus upon request	
Durability	More than 3 Mio. Cycles	
Temperature range	-20°...+70°C / -4°...+158°F	
Protection class	IP65 / NEMA 4(X)	



[www.gt-controls.com](http://www.gt-controls.com)