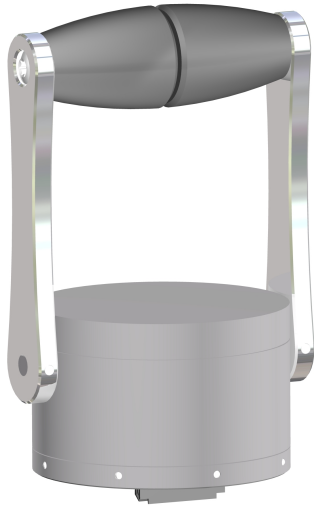


# Joystick MC140

## Engine Controller



Our series of marine joysticks and controllers are being utilized by world record holding sailboats, luxury yachts and large freighters.

The MC140 engine controller is equipped with contactless hall effect sensors and includes a customizable single or double design handle with a maximum range of  $\pm 70^\circ$  for speed control.

Furthermore it offers customizable detents as well as dimmable illumination of the deflection angle.

### Technical Description

Dimensions	Ø Housing	60 mm / 2.36"
	Height housing	39 mm / 1.54"
	Installation depth	0 mm / 0"
Mounting	Directly onto the panel with M4 screws No installation depth	
Housing	Anodized aluminum with integrated LED	
Lever	Single or double Anodized aluminium Plastic or wooden knob Standard or customized design	
Operation	Lever: customizable up to $\pm 70^\circ$ , optional detents at $\pm 8^\circ$	
Technology	Hall effect sensors	
Operating voltage	24 V	
Output signals	Voltage: 0.5 – 4.5 V Current: 4 – 20 mA	
Electrical connection	Minittek connector	
Life cycles	Up to 3 Mio. cycles	
Temperature range	$-20^\circ \dots +80^\circ\text{C}$ / $-4^\circ \dots +176^\circ\text{F}$	
Protection class	IP64 / NEMA 4 Moving parts sealed with O-ring Installation face sealed with surface sealing	



[www.gt-controls.com](http://www.gt-controls.com)